



AFFORDABLE RENTAL HOUSING IN CHISAGO CITY

Option for Live-In Parent or Grandparent



Located on the Swedish Immigrant Trail

SUMMARY SNAPSHOT

9 Fourplexes, 2 Triplexes

42 Total Units

All Units - 3 Beds | 2 Baths

3 Parking Spaces for Each Unit

Extended Family Living Space

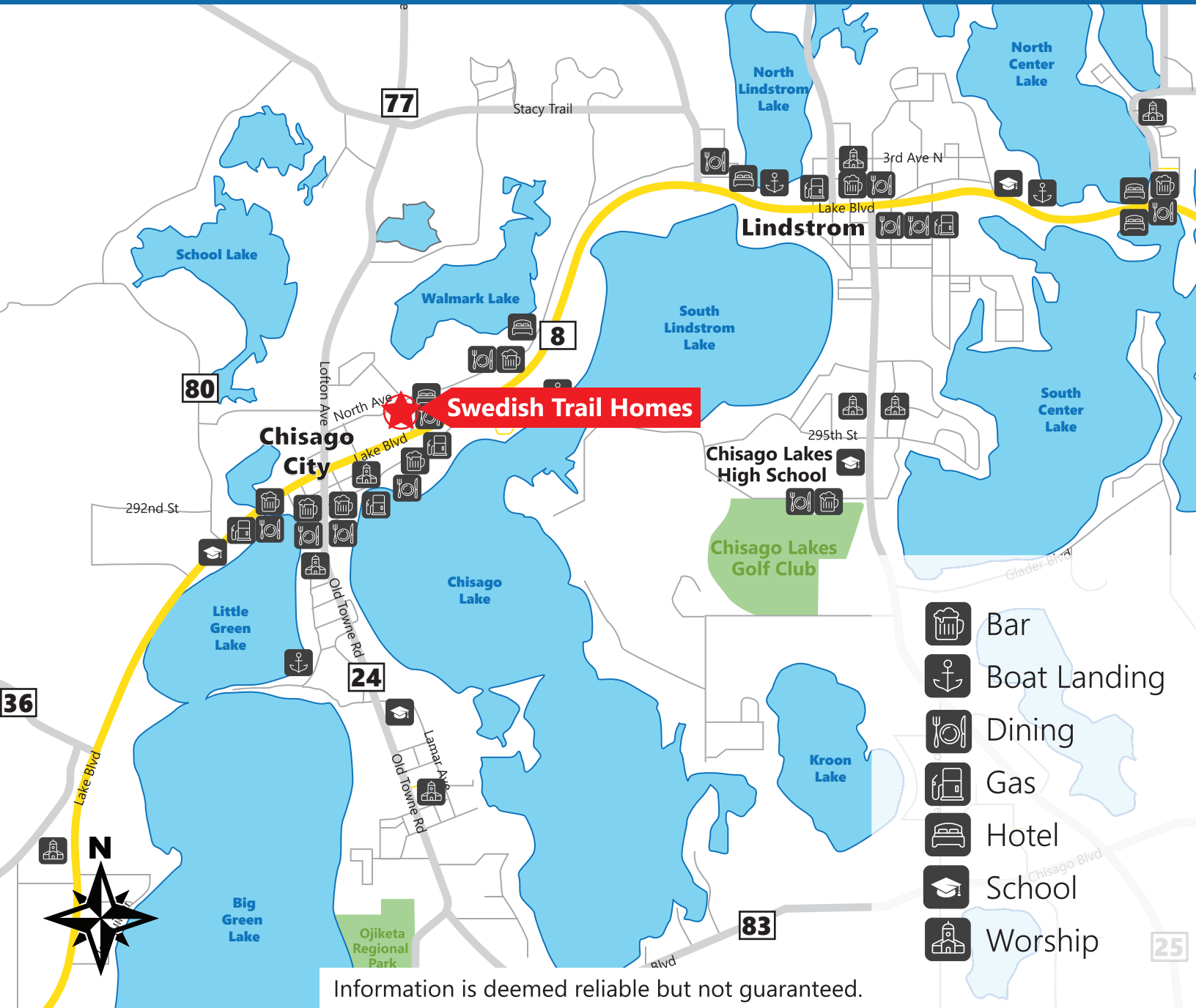
Great Location, Close to Parks & Trails

Walk to Restaurants & Shopping

Fire/ Sprinkler Each Building

Randy Kempenich | Stone Arch Funding LLC

AREA MAP



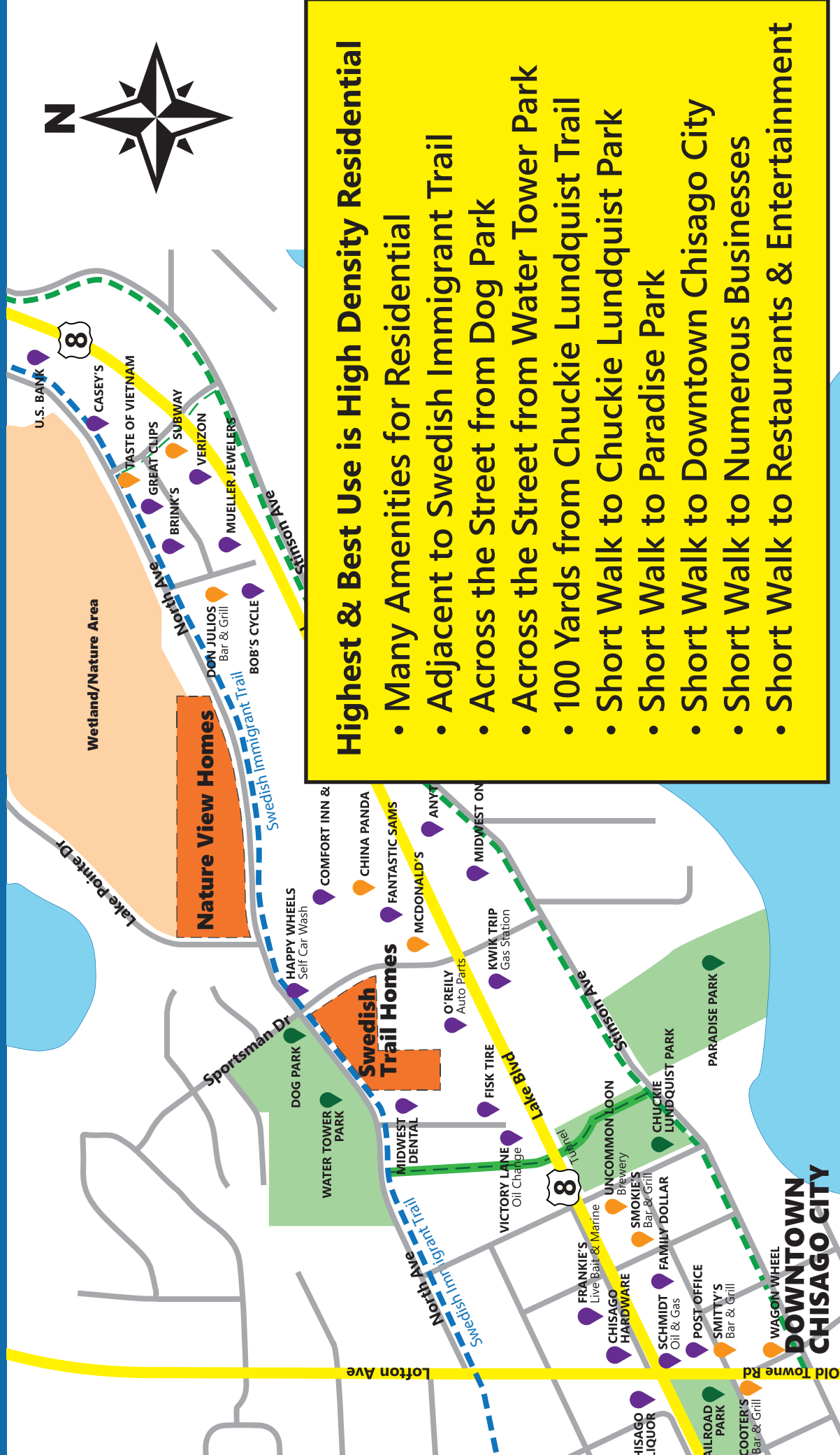
Information is deemed reliable but not guaranteed.



AMERICA'S BEST COMMUNITIES FINALIST

In 2017 the Chisago Lakes Area was a finalist in a national competition to find the best communities in America.

NEIGHBORHOOD MAP



- Highest & Best Use is High Density Residential**
- Many Amenities for Residential
 - Adjacent to Swedish Immigrant Trail
 - Across the Street from Dog Park
 - Across the Street from Water Tower Park
 - 100 Yards from Chuckie Lundquist Trail
 - Short Walk to Chuckie Lundquist Park
 - Short Walk to Paradise Park
 - Short Walk to Downtown Chisago City
 - Short Walk to Numerous Businesses
 - Short Walk to Restaurants & Entertainment



AFFORDABLE RENTALS IN CHISAGO CITY
3 Bedrooms and 2 Baths in a Great Location

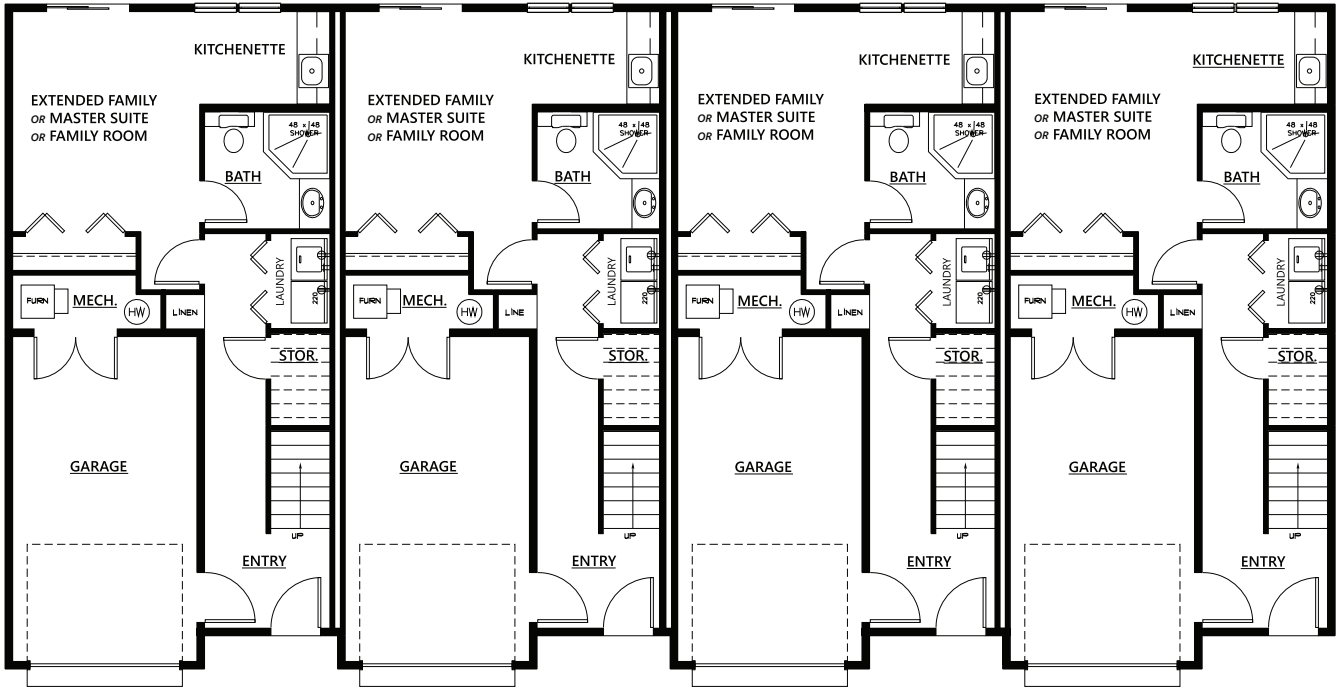
SATELITE MAP



MAIN & UPPER FLOOR PLAN

Main Floor

Approx. 1,360+ Total Sq Ft



Upper Floor

